

FIRST TERM EVALUATION 2014 - 2015

Biology

Time : 1½ hrs.

Score : 40

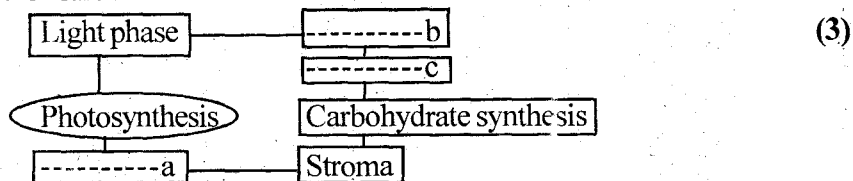
Std. 9

Instructions :

- ▲ The first 15 minutes of cool - off time.
- ▲ This time is to be spent for reading the question paper.
- ▲ You are not supposed to write anything during the cool - off time
- ▲ Read the instructions carefully and attempt the questions.

1. Pick the odd one and justify your answer.
 - a. Glucose, Sucrose, Fructose, Gallactose. (1)
 - b. Xanthophyll, carotene, chlorophyll, stomata (1)
 - c. Photosynthesis, Protein synthesis, peristalsis, Respiration (1)

2. Complete the illustration



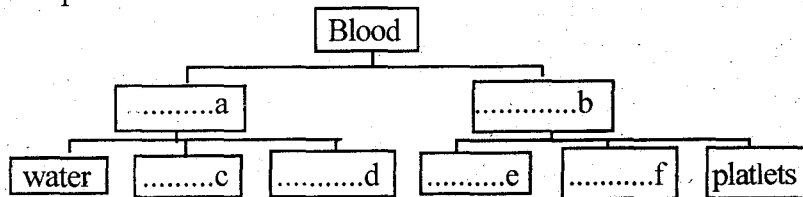
3. Analyse the following statements and answer the questions.
 - ✦ Certain Bacteria decomposes inorganic matters and gain energy for carbohydrate synthesis.
 - ✦ The above Bacteria does not depend light energy for photosynthesis.
 - a. The above statements represent which process (1)
 - b. Write an eg. of these type of Bacteria. Which inorganic substance is decomposed by it. (2)
4. List four types of human teeth (2)
5. Match the following and rearrange the table. (3)

A	B	C
Gastric juice	No enzyme	Digestion of starch
Pancreatic juice	Lysozyme	Digestion of fat
Bile	Trypsin	Germicide
	HCl	Digestion of protein

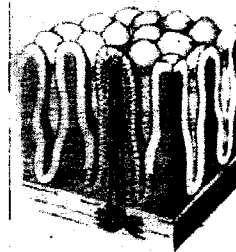
6. Suppose a man drinks black coffee with sugar. Where and how digestion takes place? (3)
7. In which part of alimentary canal mechanical digestion takes place. (2)
8. Identify the relation between the terms of the first pair and add the missing word of the second pair.
 - a. Vitamin A, Fat soluble, Vitamin C (1)
 - b. Chlorophyll a - Bluish green, Chlorophyll b (1)
 - c. Absorption of amino acids - small intestine Large intestine. (1)

(P.T.O.)

9. Correct the mistakes if any in the following statements. Replace the underlined words only.
- Humans have 32 milk teeth
 - In amoeba extracellular digestion takes place.
 - In tapeworm Alimentary canal is incomplete
 - Heart has regeneration capacity
 - Enamel is the hardest material of the body (3)
10. Complete the flow chart (3)

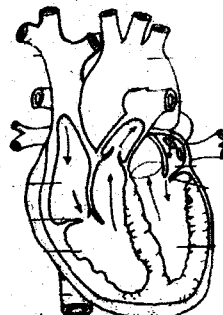


11. Analyse the following figure and answer the questions



- Figure indicates what? (1)
 - Mention its location? (1)
 - Mention its physiological importance? (1)
12. Rearrange the following parts in connections with the path of blood during systemic circulation. Mention the chamber with oxygenated blood. (3)
- Left ventricle
 - Venacavae
 - Aorta
 - various body parts
 - Right atrium
13. Examine the following information and choose relevant information among them and write it in the table. (2)
- Conduction of salt and water
 - Seive tubes and companion cells are there
 - Conduction of prepared food
 - Tracheids and vessels are there
- | Xylem | Phloem |
|-------|--------|
| | |

14. Redraw the following figure and label the suggested parts with its name.



- Artery that carries deoxygenated blood
- Valves in cardiac chambers. (4)