

FIRST TERM EVALUATION 2014 - 2015

Std. 10

Biology

Time : 1½ hrs.

Score : 40

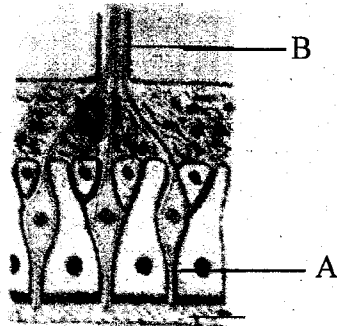
Instructions :

- ▲ The first 15 minutes of cool - off time.
- ▲ This time is to be spent for reading the question paper.
- ▲ You are not supposed to write anything during the cool - off time.
- ▲ Read the instructions carefully and attempt the questions.

1. Identify the relation between the terms of the first pair and fill the blanks.

- a. Rodcell - Photopsin, cone cell (1)
- b. Malleus - Eardrum,oval window (1)
- c. Chamber in between cornea & lens - Aquous chamber
Chamber in between lens & retina (1)

2. Analyse the figure and answer the questions



- a. Name the parts labelled as 'A' and B (1)
- b. Analyse the function of A and B (1)
- 3. Mention the location of Eustachean tube (2)
Predict the after effect if this tube is blocked
- 4. Pick the odd one. Write the common feature of the others.
 - a. Thalamus, Incus, Cochlea, Vestibule (1)
 - b. Iris, Cornea, Retina, Axon (1)
 - c. TSH, ACTH, GTH, ADH (1)
- 5. Examine the information given in the box A. Choose the information on the basis of inter connection and write the same in box 'C' and D.

A
* Seen in insects
* Seen in snakes
* Lens with six faces
* Name is ommatidium
* Name is Jacobson's organ
* Contains olfactory receptors.

C

D

6. List the parts of reflex arc.

(3)

7. Match the following and rearrange the table.

(2)

(3)

A	B	C
Adrenal cortex	Thyroxine	Decreases calcium level in the blood.
Hypothalamus	Calcitonin	Salt water balance
Thyroid	Aldosterone	Regulation of glucose level in the blood
	Vasopressin	Reabsorption of water

8. Autonomous nervous system and Adrenal gland have equal role while facing an emergency situation. Analyse this statement.

(2)

9. One's blood glucose level was recorded by 250 mg/ 100ml

a. Is this a disease? If so mention it

(1)

b. Mention any two reasons

(1)

c. Suggest necessary precautions in food habit of the patient.

(1)

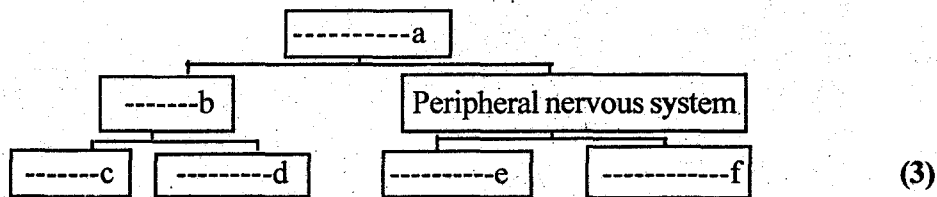
10. Write difference between

- a. Hormone and pheromone (1)
- b. Gigantism and Acromegaly (1)
- c. Gibberellins and Ethylene (1)

11. Correct the mistake if any in the following statements. Replace the underline words only. (3)

- a. Cytokinins regulate phototropism
- b. 2, 4 - D is a weedicide
- c. Bombycol is a plant hormone
- d. Oxytocin is secreted by the antilobe of the pituitary
- e. Simple goitre is an iodine deficiency disease.

12. Complete the flow chart



13. Certain symptoms of eye defects affected to two individuals are given below. Analyse it and answer the questions.

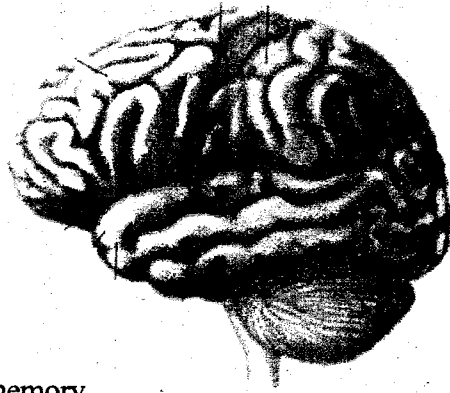
Thresyamma Age 65 Lost the transparency of the optic lens	Biju Age 14 Lost the distant vision
--	--

- a. Name the eye defects (1)
- b. Suggest remedial measures (1)

14. Identify the symptoms of myxoedema from the following

- a. Body weight increases
- b. Lethargy
- c. Loss of appetite
- d. Increased appetite
- e. Sweating
- f. Energy production decreases (3)
- g. Shivering of hands

15. Redraw the following figure and label the suggested parts with its name.



- a. Centre of memory
- b. Part that keeps body balance
- c. Part that controls involuntary actions.

(4)