

SECOND TERM EVALUATION 2013-2014

BIOLOGY

Time 90minutes

Class 10

Score:40

Instructions

- Attempt all questions
- 15 minutes can be used as 'cool off' time
- Read instructions carefully before attending the questions

Identify the word pair relationship and fill in the blanks (3)

1. Medulla Oblangata : Heart beat::: Maintenance of equilibrium of the body
2. Migration of animals : Melatonin:: Production of energy :
3. Anthrax vaccine : Louis Pasteure:: Rabies vaccine :

Find out the odd one .Write the common feature of the others (3)

4. Water ,urea, Amino acid,Uric acid
5. Chikungunya,Filariasis,Chicken pox,Malaria
6. "Disease is a result of new life style" Anand . Do you agree with him ? Justify your answer ? (2)
7. Some deficiency symptoms noticed in the coconut trees in Raghu`s house hold is given below. (2)

- * Yellow colour between the veins of mature leaves and tender leaves
- * Brown coloured dried spots on the leaves with purple coloured lower side.

(a) What are the causes of these symptoms?

(b) suggest remedies for this condition.

8. When a pea with red flowers is cross pollinated with a white flowered one the first filial generation was plants with red flowers. (2)

Factors -Red flower : RR , White flower : rr

- a) Illustrate the formation of factors of red colour in F1 generation
- b) Explain this on the basis of Mendalian law of inheritance.

9. Cancer is the condition in which cells multiply uncontrollably. How does it results in the death of a person ? (2)

10. Heart beat rate and breathing rate of Reeja was increased when she got frightened by seeing a rude elephant on the road.

(a)What is the cause of this? (1)

(b) Write two other actions happened in her body along with this? (2)

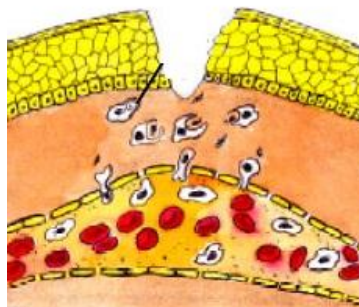
(c) Why did she feel comfort after a short while? (1)

11. Arrange the columns **B & C** in accordance with column **A** (3)

A (Hormone)	B (Target tissue)	C (Effects)
Insulin	Lipid, lipid tissues	Prepare the body to cope up with emergencies
Cortisol	Most of the tissues especially muscles ,heart, liver and kidney	Increases the rate of metabolism
Adrenaline	All tissues except the nervous tissue.	Produce glucose from amino acids
	Most of the body tissues	Lowers blood glucose level when it is increased

12. Write two usefulness of myelin in the white matter of brain. (2)

13.Observe the picture and answer the following questions.



(a) Identify the safety measure taken by the body against germs (1)

(b)) What is meant by phagocytosis? (1)

(c) Which are the W B C s capable of phagocytosis? (1)

14. The principle of vaccination is the use of pathogens themselves to destroy pathogens. How does this applicable to B C G , Salk Vaccine and T T. (3)

14. In plants ,growth promoting hormone and growth inhibiting hormones are there. Write two examples of these types of hormones and their functions ? (3)

15. Some symptoms appeared in Sindhu is given below.

(4)

Giddiness, Anaemia, vomiting , increased amount of urea and uric acid in the blood.

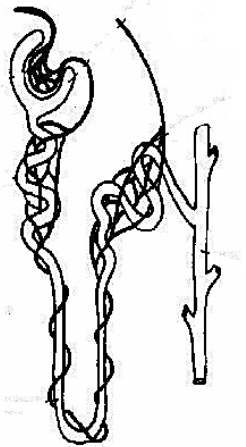
(a) Identify the disease?

(b) What may be the causes of this disease ?

(c) What is the immediate step to be taken to save her life ?

16. . Redraw the diagram given below. Name and label the following parts (4)

- a) The place where minute pores are present for ultra-filtration of blood
- b) Here urine is being collected from the nephron
- c) The part where reabsorption of essential substances to the blood re taking place.



PREPARED BY

SHAJIL U.K , H S A ,GOVT. GIRLS HIGHER SECONDARY SCHOOL,BALUSSERY,KOZHIKODE DT